

# Programme

**Holiday Language Course  
from 24.03. to 06.04.2024**

**JM Office**  
25 Hyde Gardens  
open Mo-Fr 09:00-17:00  
Sat & Sun 16:30 - 17:00  
JM-Tel.: 744020  
24 hrs emergency: 07713-739702  
Police: 999

## Don't forget:

1. Nimm dieses Programm mit nach Eastbourne und trag' es täglich bei dir!
2. Bring 1 Passbild und deine Outfits für die Mottoparties mit (z. B. Fanschal, Pyjama, Hut, Perücke, Schlips, Sonnenbrille, crazy stuff ...)

**School: Cornfield House**

**16 Cornfield Terrace, J.M. Street Map D10**

**JM Street Map:** Please use the latest version of our JM Street Map on our JM-App: For example meeting at Hippodrome Theatre, Cineworld, JM Bus Stop T1 etc

→ **Sun 24.03. EASTBOURNE ARRIVAL DAY** at ASDA Car Park (next to IMO car wash) **19**

→ **Mon 25.03. DEAR HOST FAMILIES:** Please take your students to the **Hippodrome**

Afternoon/Morning	<b>SCHOOL INTRODUCTION</b> 07:45 at Royal Hippodrome Theatre See JM Map on JM App. All School & Mini Groups. <b>Please bring £39.00</b> for your 2 week travelcard	<b>TOWN TOUR</b> <b>G</b> 10:15 or 11:30 Time see info sheet! Meeting point: Pier	<b>JUNIOR MEETING</b> After Town Tour Additional introduction for our students up to 12 years	<b>ORIENTATION RALLY</b> <b>G</b> 14:30 - 16:30 Start and finish at the pier. <b>1st, 2nd and 3rd prizes plus J.M. hats and pens for everybody!</b>
	<b>CHEESEBURGER &amp; CHICKEN McNUGGETS MEAL AT MCDONALD'S</b> <b>FOR OUR JUNIORS UP TO 12 YEARS</b> <b>15a</b> (During the Junior Walk)			
Evening	<b>J.M. Cards:</b> See your leader at the party to collect your J.M. Card. <i>Bring your passport photo!</i>			
	<b>WELCOME ROLLER SKATING PARTY</b> 19:00 at the „WAREHOUSE“ <b>1</b> Evening Bus Service home 22:00 (Drop off takes appr. 30 min)			

For you, your parents, your friends, ...new photos online from today - every day! [www.matthes.de/fotogalerie](http://www.matthes.de/fotogalerie)

→ **Tue 26.03. 08:00 + 09:30 SCHOOLWALK:** Special Service on the first school day  
 You can meet a leader at Stop C3 in Cornfield Road (for Cornfield House). See Bus Stop Guide in the JM App. A leader will show you the way to your school.

Afternoon	<b>SCHOOL</b> A-Groups 08:20-09:50 B-Groups 10:00-11:30 C-Groups 11:40-13:10 All Mini Groups M1, M2, ... 09:00-10:30 + 10:40 - 12:10	<b>BRIGHTON EXCURSION</b> <b>C</b> 13:45 A leader is waiting in front of the station to show you the way <b>14:00</b> Departure at Junction Road Coach Park 19:00 Eastbourne Arrival & Evening Bus Service home
-----------	--	--

→ <b>Wed 27.03. SCHOOL</b> B-Groups 08:20-09:50 C-Groups 10:00-11:30 A-Groups 11:40-13:10 All Mini Groups M1, M2, ... 09:00-10:30 + 10:40 - 12:10	<b>WEMBLEY STADIUM TOUR</b> 09:45 Meet your leader at Eastbourne Station <b>Don't be late - the train does not wait!</b> "Extra Value Meal" Dinner at McDonalds <b>20:45 Arrival in Eastbourne</b> <b>5</b>	<b>MUSICAL LION KING</b> 11:15 Meet your leader at Eastbourne Station <b>Don't be late - the train does not wait!</b> "Extra Value Meal" Dinner at McDonalds <b>20:45 Arrival in Eastbourne</b> <b>5</b>	<b>Harry Potter Studio Tour</b> 09:15 Meet your leader at Eastbourne Station <b>Don't be late - Harry Potter does not wait!</b> <b>19:45 Arrival at Eastbourne/Station</b> <b>5</b>
---	---	--	--

Activities continue next page





## 27.03. Activities continued

Afternoon	 <b>BOWLING OR LASER QUEST</b> 14:00 at Ten Pin <b>P</b> One free game for everybody	 <b>CINEMA AFTERNOON</b> AT CINEWORLD <b>12</b> Choose your film! 13:30 At the 8-screen Cineworld in the Beacon Shopping Centre
	<b>FAN EVENT:</b> <b>19:00 PARTY AT CLUB NEXT DOOR</b> Evening Bus Service home <b>N</b> 22:00 (Drop off takes appr. 30 min)	
Evening		

## → Thu 28.03 . SCHOOL

C-Groups 08:20-09:50	A-Groups 10:00-11:30	B-Groups 11:40-13:10	All Mini Groups M1, M2, ... 09:00-10:30 + 10:40 - 12:10
-------------------------	-------------------------	-------------------------	--

### TENNIS-& GOLF-CAMP: ONLY IF BOOKED! PLEASE DON'T FORGET YOUR CAMP TODAY! SEE DETAILS ON CAMP SHEET

Afternoon	 <b>J.M.SPORTS</b> 13:30 - 16:00 <b>A</b> • Football • Volleyball • Tennis (until 3pm)	
	<b>TRADITIONAL ENGLISH PUB QUIZ</b> at the „Hart“ of Eastbourne with Dean 19:45 meet in front of the Pub (Bring your Passport!) <b>Q</b> 23:30 Private JM Taxi Service Home! 3 drinks included!	
Evening		

## → Fri 29.03. 06:30 -Wait at your J.M. Bus Stop (find on Info Sheet) until your leader picks you up!

Evening	 <b>LONDON SIGHTSEEING</b> 19:00 • Madame Tussauds • Sightseeing Tour • Covent Garden Eastbourne Arrival & Evening Bus Service	Returnees (13+) can do their own programme instead of Madame Tussauds	
	<b>BLACK &amp; WHITE PARTY:</b> <b>19:30 PARTY AT CAMEO</b> Evening Bus Service home 22:00 (Drop off takes appr. 30 min) Karaoke-Session (upstairs 19.30-21.30) Free Candyfloss for everybody		
			

## → Sat 30.03. SCHOOL

A-Groups 08:20-09:50	B-Groups 10:00-11:30	C-Groups 11:40-13:10	All Mini Groups M1, M2, ... 09:00-10:30 + 10:40 - 12:10
-------------------------	-------------------------	-------------------------	--

Afternoon	<b>TREND WORKSHOPS</b> ☺ See details on your Workshop-Sheet <b>Hastings Excursion 13:35</b> Meet INSIDE Eastbourne Station <b>5</b> <b>PIRATE ADVENTURE GOLF</b> 14:00 at Treasure Island, E9, Royal Parade <b>K</b>	<b>ROLLER SKATING</b> 14:15-16:00 at Treasure Island Royal Parade, E9 <b>K</b>				
				<b>J.M.SPORTS</b> 14:00 - 16:00 <b>A</b> • Football • Volleyball		

➔ **Sat 30.03./Sun 31.03. Attention: Beginning of SummerTime!!!**

⌚ Please put your clock forward 1 hour when you go to bed!  
For example: From 22:00 hrs to 23:00 hrs!

➔ **Sun 31.03.**

**For all B-Groups (08.20 hrs): Special Easter School Bus Service:**

**07:30:** Wait at your J.M. Bus Stop until a leader picks you up

**For all C-Groups & Minigroups: Public Bus Service starts at...**

Bus No. 1: 08:25 hrs; Bus No. 1A: 07:30 hrs, Bus No. 3: 08:40 hrs, Bus No. 5A: 08:57 hrs, Bus Loop: 08:05 hrs, Bus No. 51: 08:40 hrs, Bus No. 6: 08:54 hrs

<b>SCHOOL</b>	B-Groups 08:20-09:50	C-Groups 10:00-11:30	A-Groups 11:40-13:10	All Mini Groups M1, M2, ... <b>10:00-11:30 + 11:40 - 13:10</b>
---------------	-------------------------	-------------------------	-------------------------	---

See also bus  
timetable on  
JM App for details

Afternoon

**NINJA ARENA**  
Meet a Leader at Eastbourne  
Station at 13.40hrs



➔ **Mon 01.04. 07:30 -** Wait at your J.M. Bus Stop until your leader picks you up!



**LONDON SHOPPING**

directly after arrival in London: London Eye (if booked)  
14:30 You can join the J.M. Photo Walk at Piccadilly Circus  
19:30 Eastbourne Arrival & **Evening Bus Service**



Evening

**ROLLER SKATING PARTY**

19:30 at the „WAREHOUSE“  
Evening Bus Service home  
22:00 (Drop off takes appr. 30 min)



➔ **Tue 02.04. SCHOOL**

C-Groups 08:20-09:50	A-Groups 10:00-11:30	B-Groups 11:40-13:10	All Mini Groups M1, M2, ... 09:00-10:30 + 10:40 - 12:10
-------------------------	-------------------------	-------------------------	--

**TENNIS-& GOLF-CAMP: ONLY IF BOOKED! PLEASE DON'T FORGET YOUR CAMP TODAY! SEE DETAILS ON CAMP SHEET**

**PIRATE ADVENTURE GOLF**  
14:00 at Treasure Island, E9,  
Royal Parade



**ROLLER SKATING**  
14:15-16:00 at Treasure Island



Royal  
Parade,  
E9

**SWIMMING**  
13:30 at Sovereign Centre

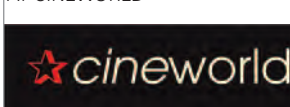


**WALKING TOUR**  
14:00 Meet at the  
pier! Walking tour to  
Beachy Head with  
kite flying!



Afternoon

**CINEMA AFTERNOON**  
AT CINEWORLD



**12 16**  
Choose  
your film!  
13:30  
At the 8-screen  
Cineworld  
in the Beacon  
Shopping Centre

➔ **Wed 03.04. SCHOOL**

A-Groups 08:20-09:50	B-Groups 10:00-11:30	C-Groups 11:40-13:10	All Mini Groups M1, M2, ... 09:00-10:30 + 10:40 - 12:10
-------------------------	-------------------------	-------------------------	--

**TENNIS-& GOLF-CAMP: ONLY IF BOOKED! PLEASE DON'T FORGET YOUR CAMP TODAY! SEE DETAILS ON CAMP SHEET**

**J.M. CHAMPIONSHIPS-CUP**

13:30-16:00 at Gildredge Park (Tennis until 3pm)  
Tennis/Badminton, Volleyball, Football  
**1st, 2nd and 3rd prizes**



Afternoon

**„JOGGINGHOSEN“-PARTY**

**19:00 PARTY AT CAMEO**

Evening Bus Service home  
22:00 (Drop off takes appr. 30 min)



**D**

presents for  
all „Jogginghosen“



Evening

	→ Thu 04.04. SCHOOL	B-Groups 08:20-09:50	C-Groups 10:00-11:30	A-Groups 11:40-13:10	All Mini Groups M1, M2, ... 09:00-10:30 + 10:40 - 12:10
Afternoon	<b>PHOTO SESSION</b> 14:30 at Gildredge Park (A) Slide show online for you, your parents, your friends,... from tonight: <a href="http://www.matthes.de/fotogalerie">www.matthes.de/fotogalerie</a>			<b>J.M. RALLY</b> 15:00 Start at Gild. Park (A) 17:00 Finish at the pier <i>1st, 2nd and 3rd prizes plus J.M. pen for everybody!</i>	
Evening		<b>V.I.P-PIZZA-DINNER</b> (M) All returnees meet in front of Pomodoro e Mozzarella 23/24 Cornfield Terrace Start: 17:30, Finish: 19:00			

	→ Fri 05.04..
Afternoon	 <b>IMPORTANT SCHOOL ASSEMBLY</b> 09:30 at Royal Hippodrome Theatre (E) <i>Take pictures on teacher's farewell ...</i> Afternoon: Pack your luggage, find your passport ...
Evening	 <div style="background-color: red; color: white; padding: 5px; text-align: center;"> <b>BLACK &amp; WHITE PARTY:</b> </div> <b>19:00 FAREWELL PARTY AT CAMEO</b> (D) <div style="display: flex; justify-content: space-between;"> <div> <b>Evening Bus Service home</b>            22:00 (Drop off takes appr. 30 min)         </div> <div style="background-color: yellow; padding: 5px; border: 1px solid black;"> <i>Free Candyfloss for everybody</i> </div> </div>

	→ Sat 06.04. DEPARTURES at ASDA Car Park	19	🕒 Find your time on info sheet
<b>Key to Symbols:</b> Special J.M. Bus Service for J.M. students only Find locations on your J.M. STREET MAP: "Where is..."			
<b>J.M. Activities - find locations on your J.M. STREET MAP</b> (A) Gildredge Park, The Goffs (C9) (B) Foot of Beachy Head, Dukes Drive (B12) (C) Brighton Excursion, Junction Road Coach Park (D9) (D) Disco "Cameo", Langney Road (D10) (E) Hippodrome Theatre, 108 Seaside Road (E10) (G) Pier, Marine Parade (E10)		(H) Disco "Embassy", Pevensy Road (D10) (I) Roller Skating Party ( <u>evening</u> ), The Warehouse (F7) (J) BBQ Beach, Royal Parade (F9) (K) Treasure Island, Royal Parade (E9) (L) Sovereign Centre, Royal Parade (G8) (M) Pizzeria „Pomodoro e Mozzarella“ Cornfield Terrace (D10) (N) Disco "Next Door/Broadway", 8 Bolton Road (D10) (O) Roller Skating ( <u>afternoon</u> ), Royal Parade (E/F9) (P) Ten Pin (Lloyd Lanes), Broadwater Way (D6) (Q) Quiz Night, 89 Cavendish Place (D9) (R) Disco „Temple“ & „The Loft“, Mark Lane (D10)	

## Notes:

---

---

---

---

---

---

---

---

---

---